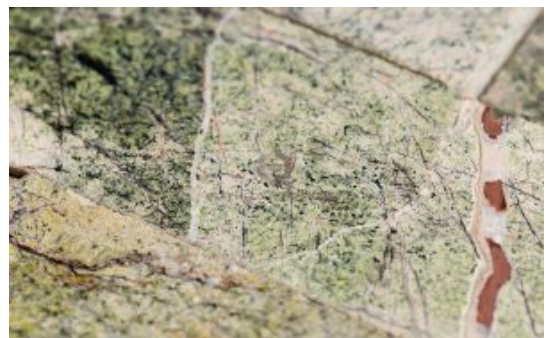


FOREST GREEN (POLISH+SAWN)

Stacked Stone System is a very unique wall cladding system with stacked straight cut and split face natural stone. It comes in 6"X24" panels that interlock seamlessly. Common applications include Bathroom walls, living room, kitchen counter backsplashes, column wraps, furniture fronts, bar counter surround and other decorative surfaces



Product Images



Specs

--	--

Packaging

--	--

SKU	FG624-1218R
Primary Color(s)	Green
Stone Type	Marble
Thickness	Thick
Adhesive	Inside: Thinset mortar recommended, Outside: Flexible latex based mortar recommended & Ideas: Laticrete Multipurpose or Multipurpose pro adhesive
Variations	Solid
Application	Walls/Fireplace/Backsplash
Usage	Indoor/Outdoor
Weight	3.9 Kg
Dimension (cm)	60.00 X 15.00
Thickness (mm)	12-18 mm

Weight/Piece (KG)	3.9
Pieces/Box	6
Weight/Box	24
Boxes/Crate	28
Pieces/crate	168
Square Feet/crate	168
Square Meter Per crate	15.61
Weight per crate (KG)	722
Square feet per container (21 MT)	4872
Square meter per container	453